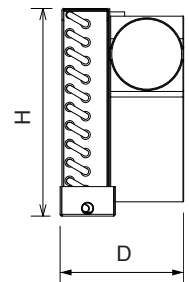
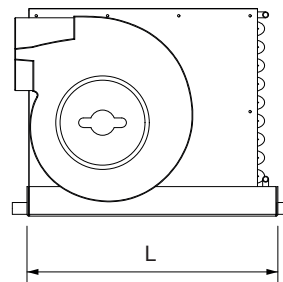
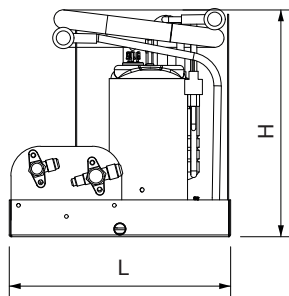
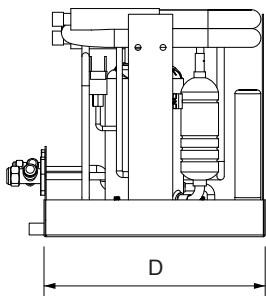
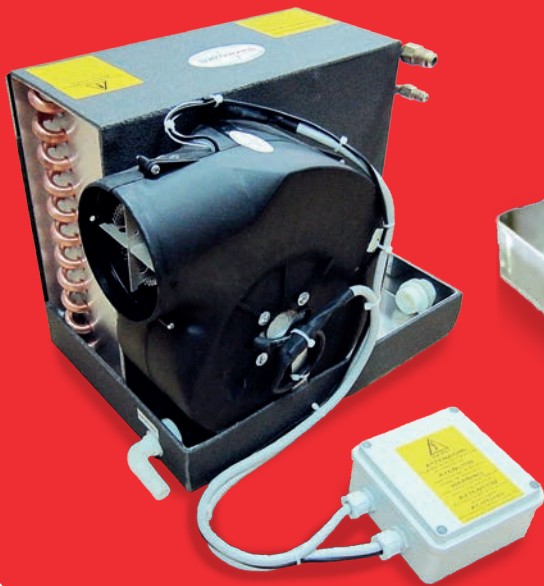


BB

Sistemi split ad espansione diretta
Direct expansion split systems
8.000 - 30.000 BTU/h



Comando digitale a parete, a richiesta opzione Wi-Fi
Digital remote control, Wi-Fi option on request



Caratteristiche tecniche Specifications

Model	BB08H	BB10H	BB13H	BB16H	BB18H	BB24H	BB30H
Nominal cooling capacity BTU/h - W	8000 - 2340	10000 - 2930	13000 - 3810	16000 - 4690	18000 - 5270	24000 - 7030	32000 - 9384
Nominal heating capacity BTU/h - W*	9437-2737	11307-3316	14427-4231	18997-5571	21774-6385	28360-8316	37230-10918
Nominal heating capacity BTU/h - W**	6100-1800			2x6100-1800X2			
Nominal power input kW	0,92	0,94	1,14	1,6	2,1	2,4	3,1
Full load amps FLA A/h	3,2	3,6	5,4	8,3	10,9	12,6	14,5
Power supply V-Ph-Hz	220-1-50						
Max circuit breaker A	10		13		16	20	30
Refrigerante connestions diameter	1/4" - 3/8"	1/4" - 3/8"	1/4" - 3/8"	1/4" - 1/2"	1/4" - 1/2"	3/8" - 5/8"	
Blower diameter mm	100			2x100			2x120
Sea water connestions mm	19						25
Condensate drain diam. mm	16						
Sea water flow Lt/min - GPM m3/h	8 - 2,5- 0.48		15 - 4 -0.9		22 - 5,81.4		30 - 81.8
Refrigerante charge g	260	270	350	400	630-650		700
Weight condensing unit kg	11	18	19	24	26	32	37
Weight ventilating unit kg	5		8,5	8,9	12,6		
Sizes Condensing unit LxDxH mm	300x300x308	300x300x310	300x300x340	330x330x360	330x330x380	330x350x430	390x420x450
Sizes Ventilating unit LxDxH mm	340x168x282		340x227x31		590x229x310		590X245X310

Potenze e dati elettrici sono relativi ad una temperatura di evaporazione di 7,2°C e di condensazione di 37,8°C in modalità raffreddamento e a temperatura di evaporazione di 7,2°C e di condensazione di 54,4°C in modalità riscaldamento.

*Unità in pompa di calore con inversione di ciclo.

**Unità con resistenza elettrica. Differenti tensioni di alimentazione disponibili su richiesta.

Tutte le dimensioni +/- 10 mm. Tutti i pesi +/- 10%.

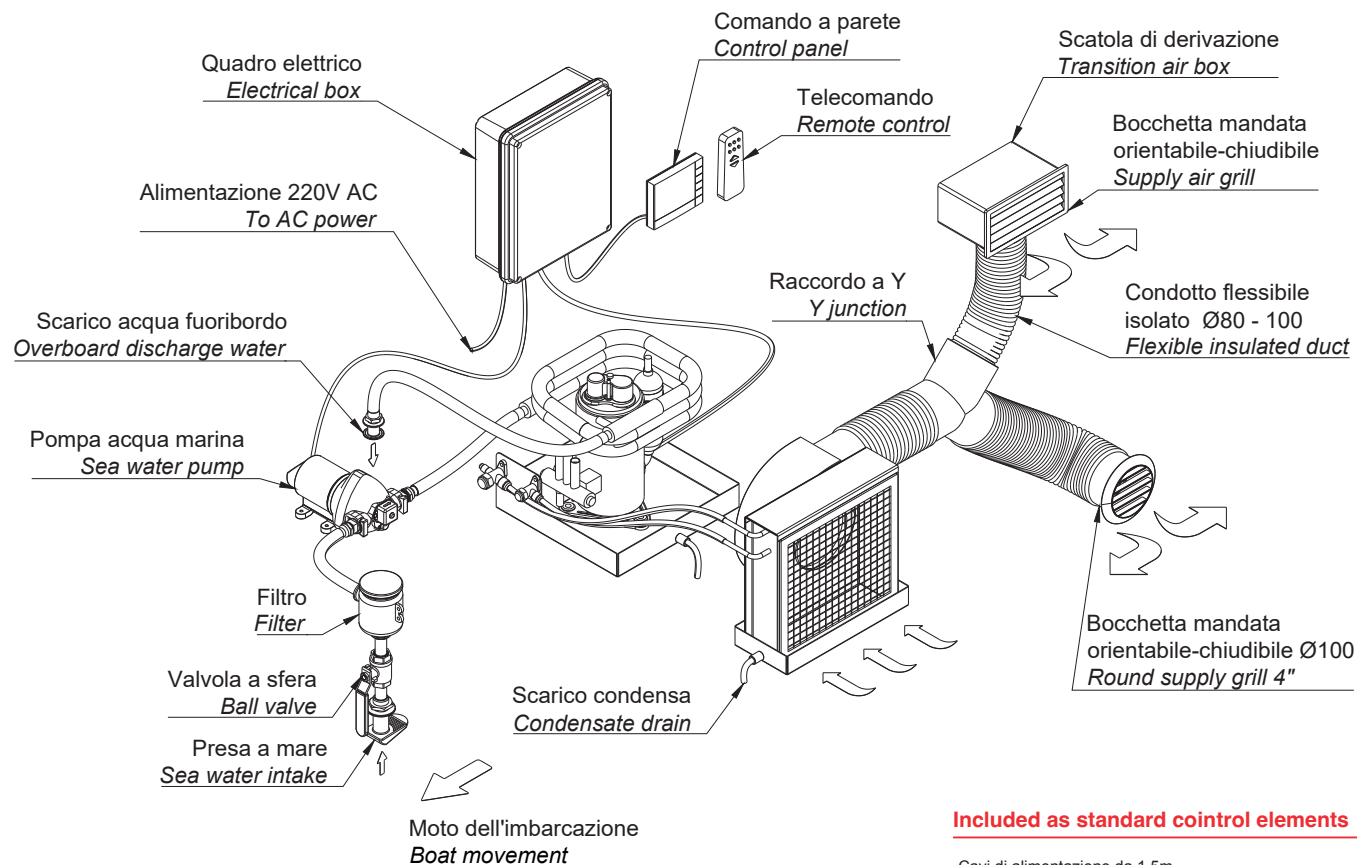
BTU and electrical data are based on 45F / 7,2°C evaporating temperature and 100F/37,8°C condensing temperature in cooling mode, and 45F /7,2°C evaporating temperature and 130F / 54,4°C condensing temperature in heating mode.

*Heat pump version with reversing cycle.

**Units equipped with electric heater.

Different voltages available upon request. All dimensions +/- 0,39 in. All weights +/-10%.

Schema di installazione Installation scheme



Included as standard control elements

- Cavi di alimentazione da 1,5m
- Pannello di controllo con cavo di collegamento da 15m e telecomando

- Power supply cable 1,5m long
- Control panel with 15m connection cable and remote control